

"Best of the 80's and more" is the most fitting description of The Point's format. Using a music intensive presentation targeted at Adults 25-44, the station features the best variety of pop, rock, and alternative hits from the mid 80's to the mid 90's. Here's an example of the music you'll hear in a typical hour on 106.9 The Point.



"Eyes Without A Face"
BILLY IDOL



"More Than Words"
EXTREME



"I Love Rock & Roll"
JOAN JETT & BLACKHEARTS



"Hit Me With Your Best Shot"
PAT BENATAR



"Blue Monday"
NEW ORDER



"Wrapped Around Your Finger"
THE POLICE



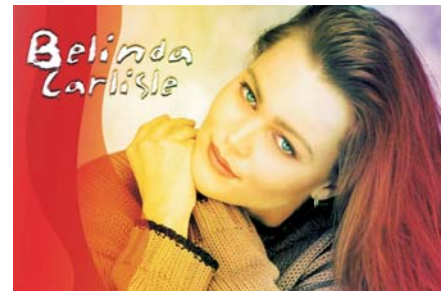
"Personal Jesus"
DEPECHE MODE



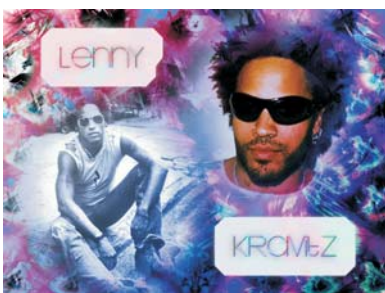
"Cryin'"
AEROSMITH



"Rock You Like A Hurricane"
SCORPIONS



"Heaven Is A Place On Earth"
BELINDA CARLISLE



"American Woman"
LENNY KRAVITZ



"What I Am"
EDIE BRICKELL & NEW BOHEMIANS



"Who's Crying Now"
JOURNEY